



**The Power of Talstar
in the Palm of Your Hand!**

FMC Confidential

Control You Can Count On

- FMC bifenthrin provides long residual control that supports your quarterly service programs
- Prallethrin adds impressive knockdown
- Formulated in a unique water-based aerosol
 - Eliminates potential staining associated with oil-based formulations
 - Leaves no visible residue behind
 - Non-flammable

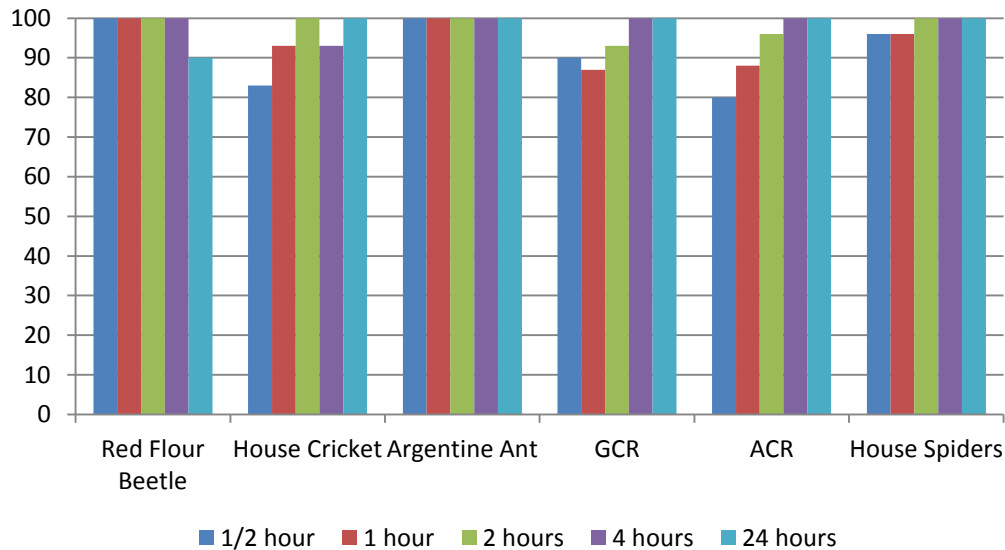


Consistency Only Talstar Can Deliver

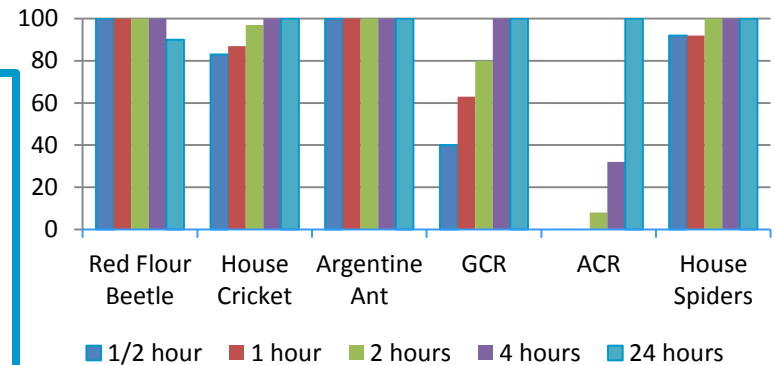
Consistent Speed and Control of Multiple Pests

- Competitors can leave you guessing

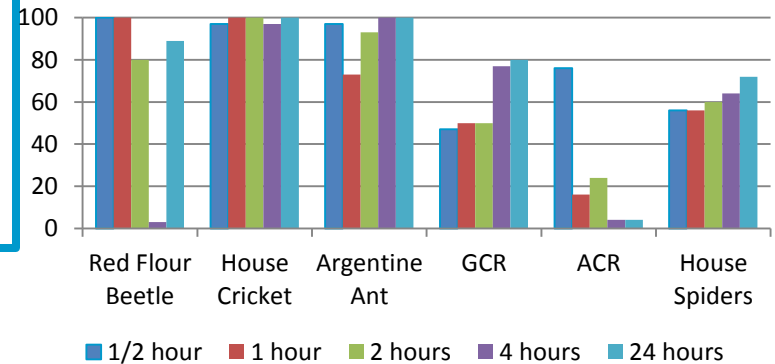
Talstar® Insecticide



Phantom® Pressurized Insecticide



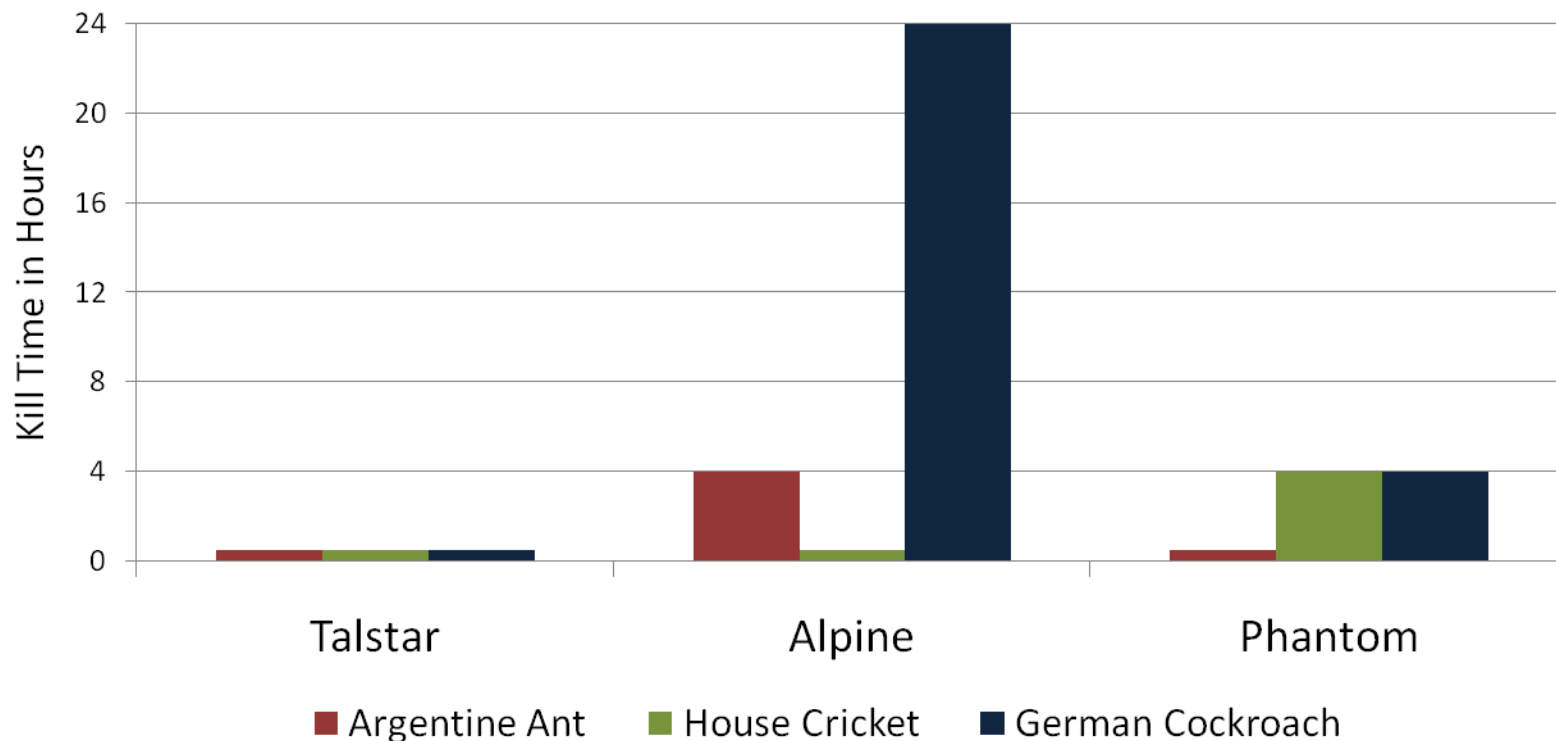
Alpine® Pressurized Insecticide



Talstar is Consistently Fast

For the confidence you need to provide quality customer service

Time to Achieve 90% Control or More



The Broad Label You Expect from a Talstar Brand Product

- Applications within food handling establishments
 - Crack and Crevice only in food areas
- Effective on a long list of indoor and outdoor pests
 - Including bed bugs
- Termites and Perimeter use
 - Great for termite galleries!
- Currently registered in 43 states
 - and Washington DC



INSECTICIDE

EPA Reg. No. 279-3365 EPA Est. 11623-GA-1

ACTIVE INGREDIENTS:

Bifenthrin	0.05%
Prallethrin	0.03%
OTHER INGREDIENTS	99.92%
Total	100.00%

*As isomers 97% minimum, trans isomers 3% maximum

NON FLAMMABLE
 Contains no CFCs or Other Ozone Depleting Substances.
 Federal Regulations Prohibit CFC Propellants in Aerosols.

**KEEP OUT OF REACH OF CHILDREN
CAUTION**

See other panels for additional precautionary statements.

FIRST AID	
If on skin or clothing	• Take off contaminated clothing. • Rinse skin immediately with plenty of water for 15-20 minutes. • Call a poison control center or doctor for treatment advice.
HOTLINE NUMBER	
Have the product container or label with you when calling a poison control center or doctor, or going for treatment. You may also contact 1-800-351-0549 for Emergency Assistance.	
NOTE TO PHYSICIAN	
<small>This product contains a pyrethroid. If large amounts have been ingested, the stomach and intestine should be evacuated. Treatment is symptomatic and supportive. Capable to take, eat, or alcohol may increase absorption and so should be avoided.</small>	
<small>For information Regarding the Use of this Product Call 1-800-325-1FMC (1382).</small>	



FMC Corporation
 Agricultural Products Group
 1735 Market Street
 Philadelphia, PA 19103

Net Weight: 16 oz
02-10-11

PRECAUTIONARY STATEMENTS
Hazards to Humans & Domestic Animals
CAUTION
 Avoid contact with skin or clothing. Wash thoroughly with soap and water after handling and before eating, drinking, chewing gum, using tobacco, or using the toilet. Remove contaminated clothing and wash before reuse.

Environmental Hazards
 This product is extremely toxic to fish and aquatic invertebrates. To protect the environment, do not allow pesticide to enter or run off into storm drains, drainage ditches, gutters or surface waters. Care should be used when spraying to avoid fish and reptile ponds in and around ornamental ponds. Applying this product to calm weather when rain is not predicted for the next 24 hours will help to ensure that wind or rain does not blow or wash pesticide off the treatment area.
 This product is highly toxic to bees exposed to direct treatment or residue on blooming crops or weeds. Do not apply this product or allow to drift to blooming crops if bees are visiting the treatment area.

PHYSICAL OR CHEMICAL HAZARDS
 Contents under pressure. Do not store near heat or open flame. Do not puncture or incinerate container. Exposure to temperatures above 130°F may cause bursting. Do not apply around electrical equipment due to the possibility of shock hazard.

DIRECTIONS FOR USE:
 It is a violation of Federal law to use this product in a manner inconsistent with its labeling.
 • Do not use as a space spray.
 • Do not spray animals or animal bedding.
 • Cover or remove exposed food (including pet food or animal feed).
 • Cover all food processing surfaces and utensils. Thoroughly wash with soap and water before re-use.
 • Do not allow children or pets in treated area until spray has dried.
 • Shake well before using.
 Do not contaminate food or feed. Do not apply directly to food. Do not apply to disrooms when in use. Do not apply this product in occupied patient rooms or in any rooms while occupied by the elderly or infirm. This product may be used with the supplied actuator and injection tubes.

INDOOR DIRECTIONS FOR USE:
PERMITTED AREAS OF USE INCLUDE:
 Homes, apartment buildings, laboratories, restaurants, kitchens, cafeterias, dairies, dairy products processing plants, milk storage rooms, supermarkets, hospitals (nonoccupied patient areas), nursing homes (nonoccupied patient areas), egg processing plants, bakeries, bottling plants, wineries and similar structures, breweries, institutions, hotels, motels, kennels, stables, schools, nurseries, stores, warehouses, manufacturing canneries, frozen food plants, cereal processing and manufacturing plants, pickle factories, grain mills, granaries, spice plants, food manufacturing, processing and serving establishments.
 Transportation—All (except aircraft cabins), buses, trucks, marine vessels, railcars. Storage—Commercial, industrial, apartment, office and storage buildings.

CRACK AND CREVICE AND SPOT APPLICATION:
 For Crack and Crevice: Inject spray into cracks, crevices where insects may be harboring or breeding. Spray into hiding places including cracks, crevices, moist areas, openings around pipes and sinks, under refrigerators, behind baseboards, coffee makers, and meter boxes. Use injector tip, releasing approximately 1 second spray per spot. For serious infestations, spray spots approximately 12 inches apart for light infestations, spray approximately 5 feet apart. For crevice voids, calculate the void's cubic area and treat at the rate of 1 - 5 sec per 3 ft³. Several holes may be required in long running voids.
 For Spot Spray: Hold container upright while spraying. Direct nozzle approximately 18 inches from surface to be treated. Spray until surfaces are wet. Apply directly on insects in these locations when possible. Spot

Page 1

For the latest info on state registrations and to find this label, visit us at

www.fmcprosolutions.com

FMC
 FMC Professional Solutions

Talstar
 INSECTICIDES

FMC Confidential

Easy to Use

- 16 ounce can
 - Comes with crack & crevice straw
 - Actuator already installed on the can
- Compatible with Aerosol Delivery Unit from B&G
 - For more information on the ADU
<http://www.bgequip.com/index.html>

Watch the ADU video at www.fmcprosolutions.com



Not Just Another Residual Aerosol

- **Talstar Insecticide is Unlike Any Other**
 - Bifenthrin is one of the longest lasting active ingredients available, and FMC offers the first aerosol to the professional pest management market
 - Its speed and consistency of control set it apart from other residual aerosols
 - The combined power of FMC Bifenthrin and Prallethrin delivers both speed and efficacy not often found in other aerosols

Talstar®

INSECTICIDE

The Power of Talstar
in the Palm of Your Hand!





For more information on Talstar or any
other FMC product, please visit us at
www.fmcprosolutions.com

FMC Confidential